



OnCourse®

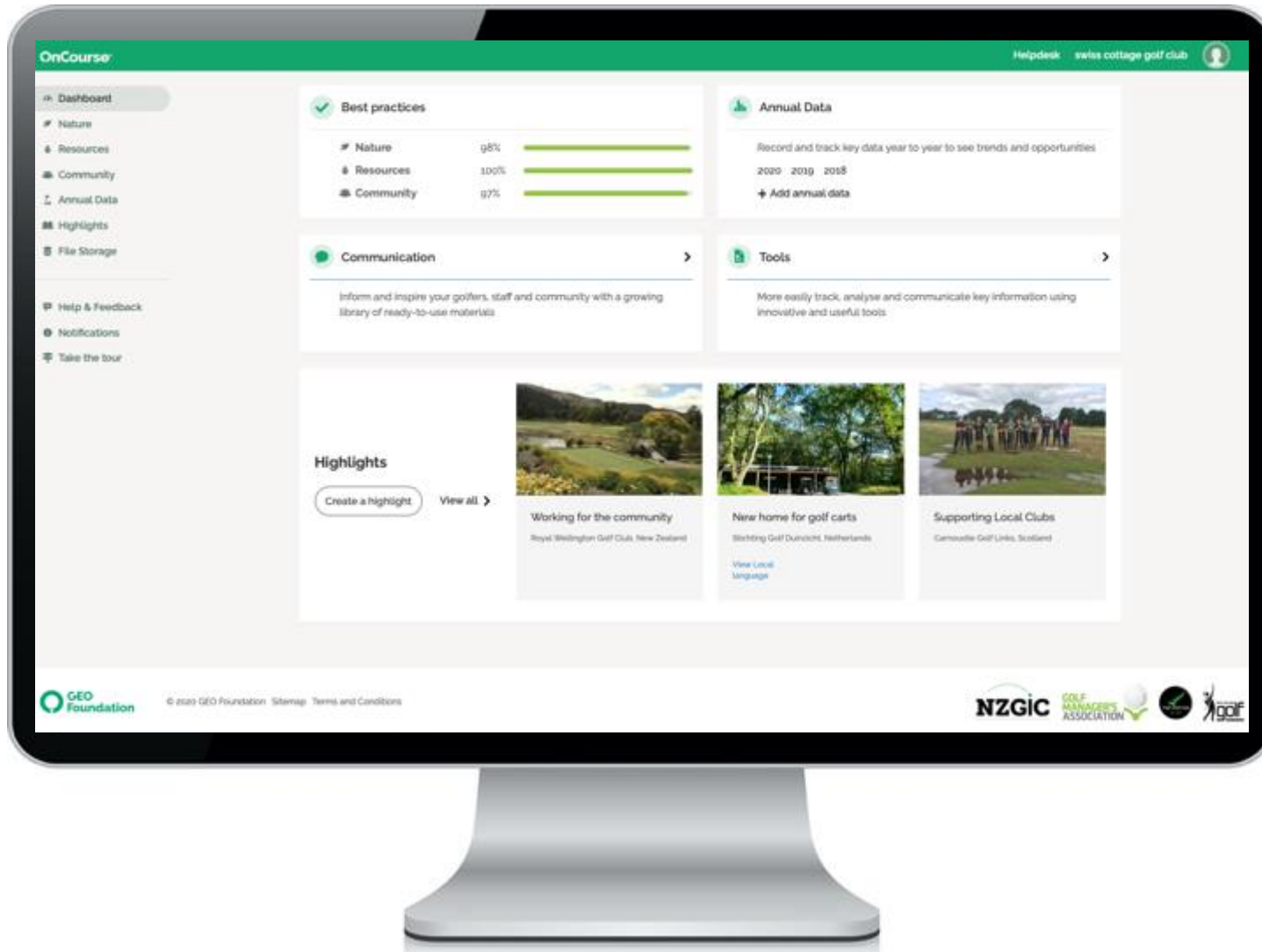
... for sustainable, efficient
and popular golf facilities

Driving sustainability to help our clubs
overcome risks and open new opportunities





New Zealand



- Purpose built, online programme for golf clubs
- Designed to help embed sustainability into and across club decision making
- Easy to use functions to review and plan practices; share highlights; track and analyse key data; communicate credibly

Our approach to sustainability

Fostering nature

- **Conserving biodiversity**
Carefully manage our habitats to maximise the amount of wildlife on and around the course
- **Preventing pollution**
Making sure we safeguard the quality of the environment, and avoid risks for staff and golfers
- **Managing turf responsibly**
Providing the best possible playing surfaces, focussing on healthy turfgrass and minimising chemical inputs

Conserving resources

- **Conserving water**
Sourcing water responsibly, minimising consumption and using efficiently
- **Conserving energy**
Seeking to use clean, renewable sources and invest in efficient technology and appliances
- **Reducing waste materials**
Cutting out single use materials and packaging, and buying products that are recycled and recyclable

Strengthening Community

- **Community partnerships**
Using local suppliers, and working with other groups to help strengthen the club, community and improve the local environment
- **Accessibility**
Helping to grow the game and share the health benefits of golf with more people
- **Communicating**
Becoming a recognised focal point for environmental and community leadership in the local area and further afield

OnCourse
— for the future

Find out more at
www.sustainable.golf

Our commitments to sustainability

Preventing pollution



Zero waste



Healthy environment



Community partnership



Conserving biodiversity



Energy efficiency



Water conservation



Sharing our successes



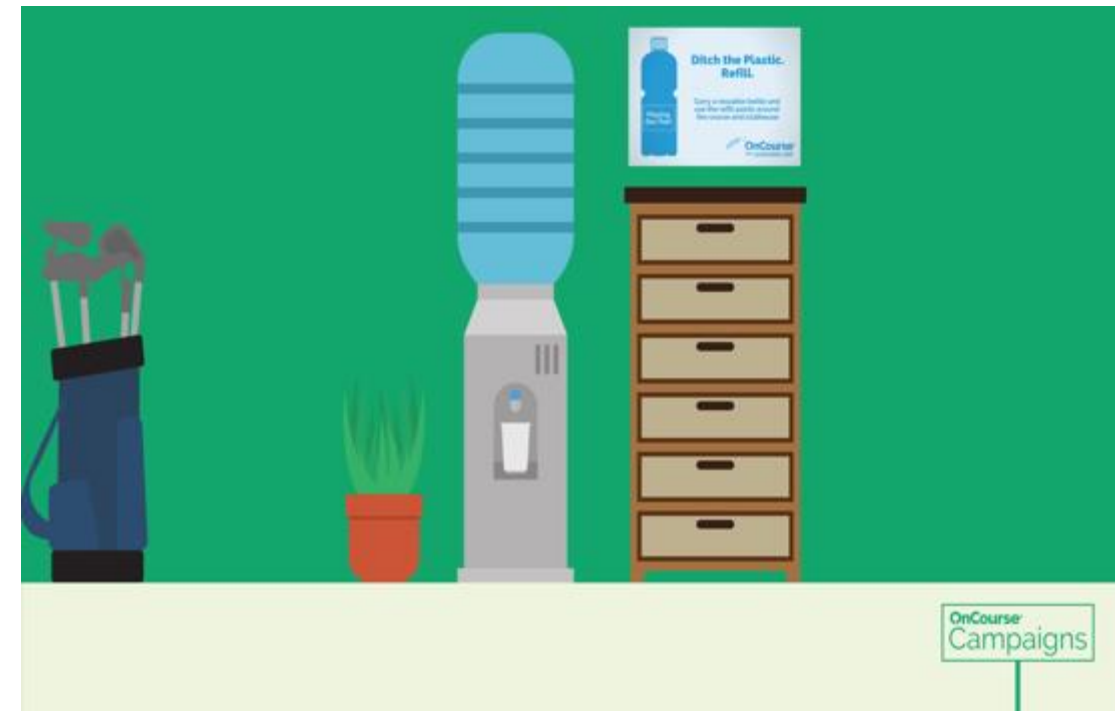
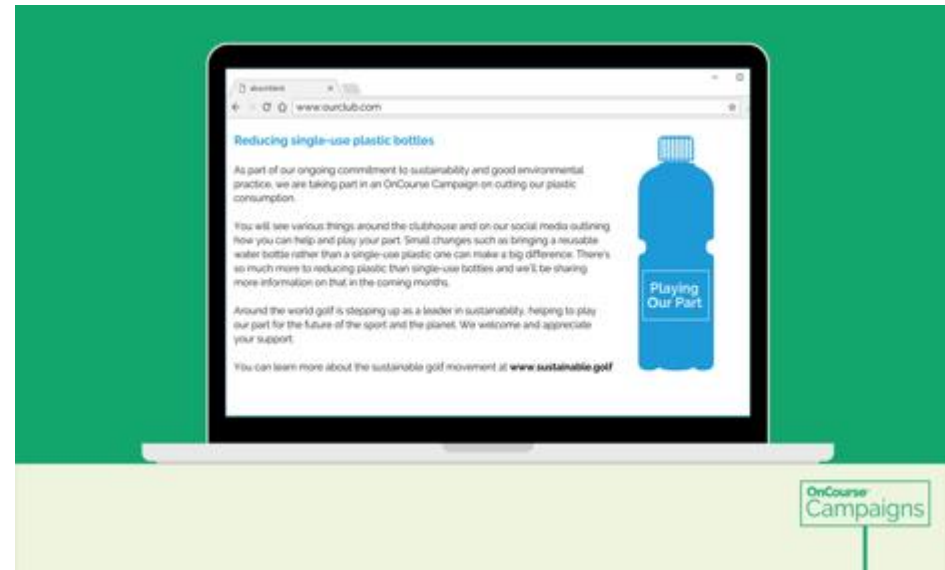
Managing turf responsibly



OnCourse
for the future

Find out more at
www.sustainable.golf

Engage staff, golfers and families in themed activities

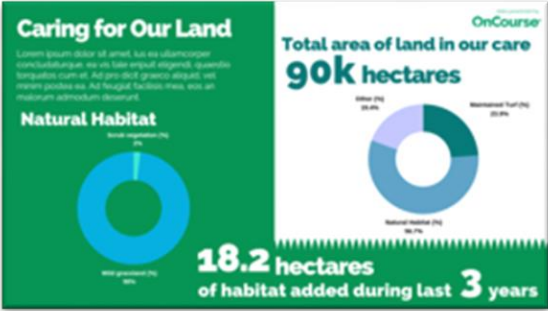
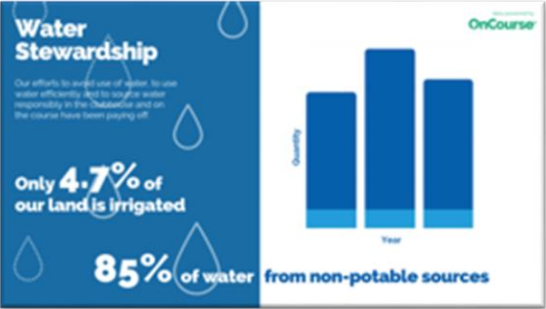
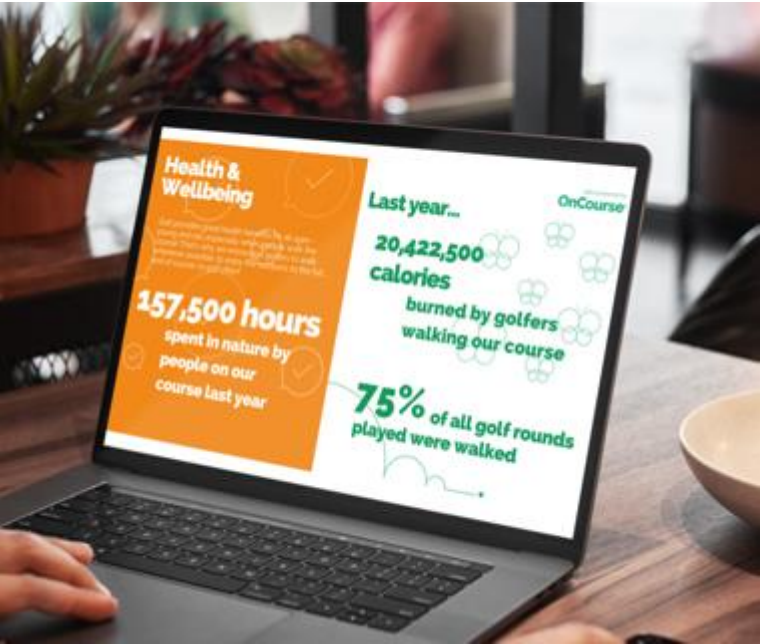


OnCourse®

Sustainability Scorecard

2018

- ✓ Performance statistics
- ✓ Social and environmental value indicators
- ✓ Carbon balance



OnCourse[®]

for climate action



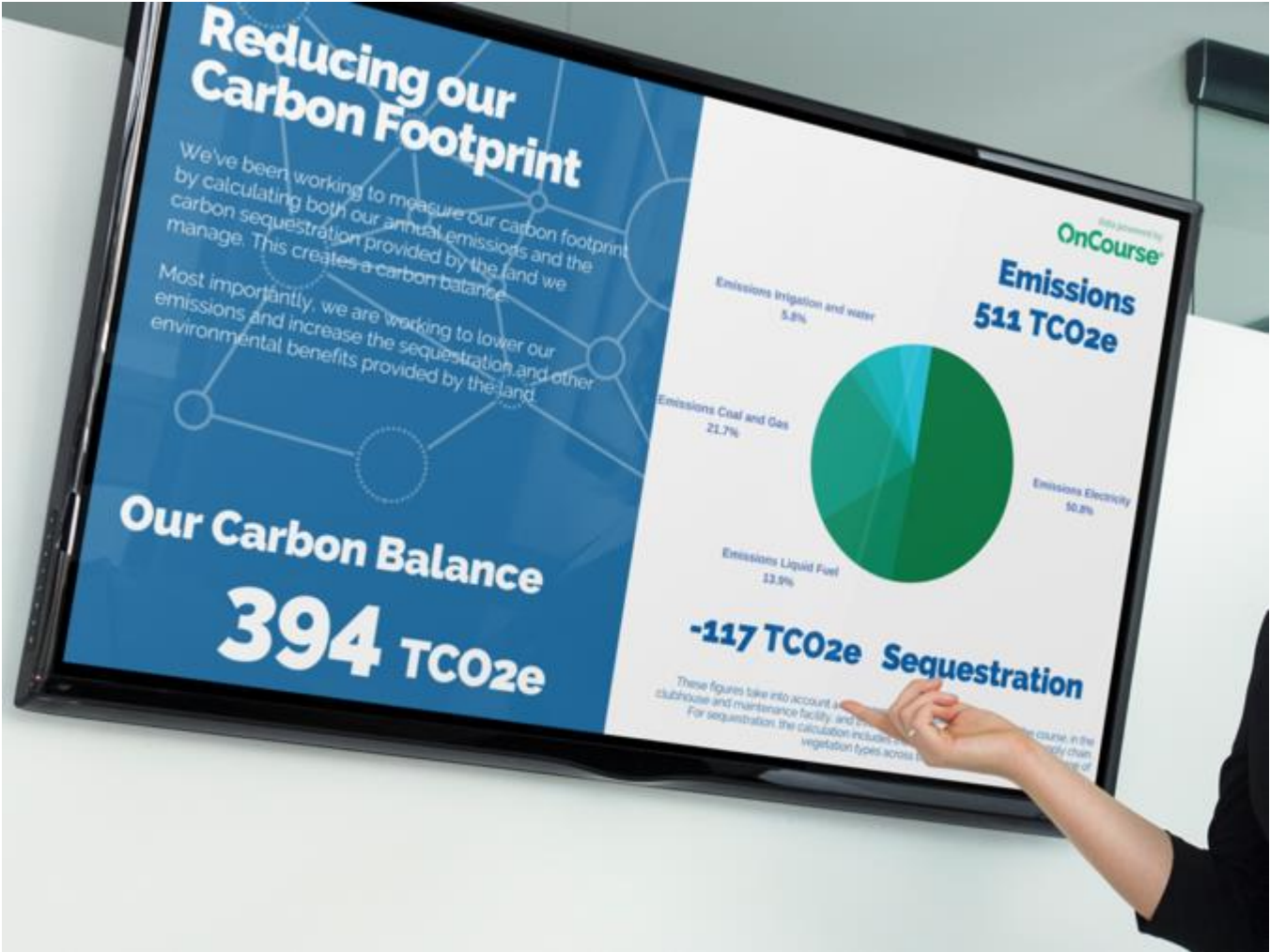
United Nations
Climate Change



Gold Standard[®]
for the **Global Goals**

EMISSIONS	Type	Source	Value	Emissions KgCO ₂ e
	Use of grid renewables	Electricity (grid)	406668 kWh	19520
		Biomass	0 kWh	0
	Use of on-site renewables	Solar	0 kWh	0
		Wind	0 kWh	0
		Biofuels (all generations)	0 L	0
		Non-renewable grid electricity	0 kWh	0
	Use of non-renewable energy	Diesel	6133 L	15946
		Petrol	3999 L	8478
		Coal	0 kg	0
		Heating oil	0 L	0
		Natural gas	0 M3	0
		Propane / butane	0 M3	0
		LPG	0 L	0
	Nitrogen fertiliser denitrification (production of nitrous oxide)	Nitrogen use	1633 kg	4589
		Water (golf course and grounds)	45000 m3	15480
	Water use	Water (clubhouse)	946 m3	325
		Water (maintenance facility)	0 m3	0
	Production of fertilisers	Nitrogen	1633 kg	8165
	Production of pesticides (active ingredients)	Phosphorus	179 kg	492
		Potassium	330 kg	159
		Herbicides, fungicides, insecticides	13 kg	189
	Transport of topdressings and sand	Production/transport topdressings and sand	kg	
	Waste	Waste to landfill	1000 kg	586
		Waste recycled	850 kg	18
	Maintenance Equipment (production, transport, repair)	Number of vehicles	39	31088
	Total emissions:			105 tCO ₂ e

SEQUESTRATION	Type	Source	Value	Emissions KgCO ₂ e
	Turfgrass	Maintained turfgrass	19.7 ha	54471
		Heathland	0 ha	
	Habitats	Native woodland	3 ha	30387
		Non-native woodland	10 ha	101290
		Scrub vegetation	0 ha	0
		Wetland	1 ha	2900
	Wild grassland	Wild grassland	2 ha	960
		Wildflower meadow	1 ha	480
	Total sequestration:			190 tCO ₂ e





Pathway to credible recognition

“GEO Foundation is the only sports based member of ISEAL, a fantastic example of innovation and proactive leadership, and testament to the efforts being made to address sustainability comprehensively and credibly.”

*Karin Kreider
CEO, ISEAL Alliance*



Share, inspire and learn from others

"Community" Highlights

Selected by the OnCourse® team

Filter by country

England

Browse



Supporting charity
Fairhaven Golf Club, England



Golf taster sessions at local primary school
Market Harborough Golf Club, England
Submitted by Bob Roberts



Interesting Archaeology
Royal Cinque Ports Golf Club, England
Submitted by James Bledge



The Longest Day - raising money for cancer research
Market Harborough Golf Club, England
Submitted by Bob Roberts



Supporting Local Students
Northamptonshire County Golf Club, England



Martha Trust Golf Day
Prince's Golf Club, England
Submitted by Rob McGuirk



Working with a local wildlife trust
Abbey Hill Golf Centre, England
Submitted by Ross Edmonds



Charity days
Royal Cinque Ports Golf Club, England
Submitted by James Bledge



Prince's Junior Foundation
Prince's Golf Club, England
Submitted by Rob McGuirk

Create Your Highlight

"Nature" Highlights

Selected by the OnCourse® team

Filter by country

England

Browse



Ecological Survey
Berkhamsted Golf Club, England
Submitted by Howard Craft



Calcareous Grassland Protection
Luffenham Heath Golf Club, England
Submitted by Rowan Rumball



Working with the Wildlife Trust
Northamptonshire County Golf Club, England



Attracting otters back to the River Soave
Ceventry Golf Club, England
Submitted by Paul Quinn



Bird Box Sponsorship
Luffenham Heath Golf Club, England
Submitted by Richard Hall



Creating a Heathland Mosaic
Northamptonshire County Golf Club, England



The value of simple habitats
Fairhaven Golf Club, England



Natural Links Management
Prince's Golf Club, England
Submitted by Rob McGuirk



Dune slacks
Saunton Golf Club, England



"Resources" Highlights

Selected by the OnCourse® team

Filter by country

England

Browse



Biomass Boiler Savings
Luffenham Heath Golf Club, England
Submitted by Rowan Rumball



Water Efficiency
Royal Birkdale Golf Club, England
Submitted by Chris Whittle



Sustainable Water Source
Royal St George's Golf Course, England
Submitted by Tim Checketts



Reusing green waste
Woburn Golf Club, England



Energy efficiency
Royal Cinque Ports Golf Club, England
Submitted by James Bledge



Sustainable Revetting of Bunkers
Royal St George's Golf Course, England
Submitted by Tim Checketts



Water Sourcing & Self-Sufficiency
Woburn Golf Club, England
Submitted by Gavin Sowden



Recycling
Royal Cinque Ports Golf Club, England
Submitted by James Bledge



BIG Energy Savings
Ceventry Golf Club, England



Create Your Highlight

Inspiring stories from the grass roots

Working for the community

Royal Wellington Golf Club, New Zealand

Related to: Community



As part of a recent site upgrade, Royal Wellington GC created a new public pathway along the property's western boundary. In a joint initiative with the Greater Wellington Regional Council, the Hutt River margins were also planted with native vegetation. This has allowed unfettered movement of walkers and cyclists on the walkway, improving the recreational experience (and the quality of life) of the thousands of people who use it every week. The plantings will improve the visual appearance of the area and provide stability to riverbanks that are vulnerable to flooding.

Outdoor Classroom

Remuera Golf Club, New Zealand

Related to: Community

Created by: Spencer Cooper



SHARE



For the third year in a row we have hosted an outdoor classroom session for the year 11's from Sacred heart College which is in the nearby suburb of Glendowie. The focus of these visits is to "Demonstrate geographic understanding of the sustainable use of an environment" as part of the curriculum for the students in year 11. These visits to the golf course have become highly anticipated and interactive with a walk around the golf course looking at many aspects of our sustainability initiatives such as our: Bee Hives, efforts to promote and restore Native Fauna and Flora, organic fertilizer use, energy reduction, use of renewable energy, water conservation to name just a few. We are hoping to grow this program and to involve more schools with our golf club at this level and look forward to using our golf course more often as a classroom. Who knows, maybe some of those attending will take up the game or even want to work on golf courses. The feedback from the students has been amazing!

Inspiring stories from the grass roots

Development of naturalized areas of the golf course

Remuera Golf Club, New Zealand

Related to: Nature

Created by: Spencer Cooper



[View Gallery](#)

SHARE



The Club has been committed to reducing the total area of mown and managed rough over the past 3 years. To achieve this, the green-keeping team identified a range of areas that had the potential to be converted over to a more 'naturalized' state and communicated these proposed areas via Club newsletters and organised Club meetings. Following some amendments to the extent of areas proposed the process of naturalizing parts of the golf course commenced. A range of methodologies have been employed to regain the natural dominance of native turfgrass species such as: NZ brown top bent and fine Fescue species. Initial treatment required chemical intervention with Haloxypol and spot spraying of invasive (undesirable) species such as Kikuyu and broad leaf weeds. Over time management could become more cultural and less chemical-based. Today, the areas around the course (~ 55 600 sqm) have become a feature of the site and a characteristic that members often comment positively upon.

Protecting one of New Zealand's rarest birds

Tara Iti, New Zealand

Related to: Nature



[View Gallery](#)

SHARE



Adobe Spark

Tara Iti - the name of our club - is also the traditional Maori name for the New Zealand Fairy Tern. As part of development consent The Te Arai and Mangawhai Shorebirds Trust was established by the owners of Tara Iti. The trust is incorporated under the Charities Act 2005 with three foundation trustees. While the trust primarily concentrates on the Mangawhai Wildlife Refuge and the coast of Te Arai Beach, there is provision for the trust to widen its area of work. The objectives of the trust are to - 1) Provide resources as needed for preservation and conservation of Fairy Terns and other at-risk shorebirds - 2) Actively promote growth in the number of Fairy Terns and at-risk shorebirds - 3) Encourage the enhancement, sustainable management and conservation of the physical natural environment - 4) Raise public awareness of conservation value and encourage local community involvement - 5) Work collaboratively with organisations which will further the Trust's objectives.